

H.265 5MP IP BULLET CAMERA

YUC-K7B88



Feature

- H.265 compression saves bandwidth up to 50%
- 5MP (2592x1944) 30fps real time
- Excellent night vision performance with low noise
- Built-in varifocal lens 3~10.5mm
- ROI (Region of Interest) function for quality and FPS
- ESD & surge protection design
- Support SD card continuous
- Motion detection (area/sensitivity/motion time adjust and preview)
- Day/night profile adjustment
- 3-Axis bracket included
- Weather proof IP66
- Cold start heater built-in option
- Mobile view support (push video)
- POE support
- ONVIF compliant

Low Bandwidth



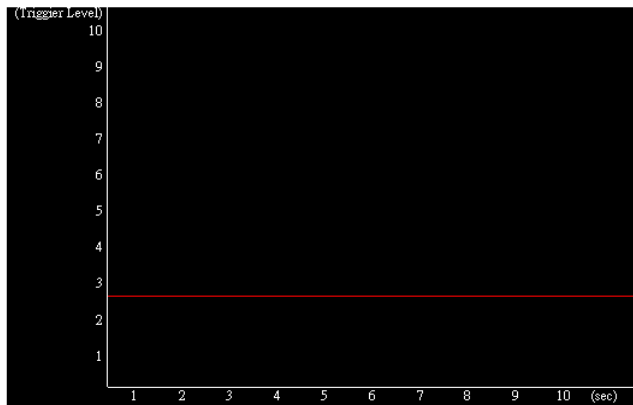
Save Until 50% of HDD Space

Area Setting: Area 1 Area 2 Area 3

Sensitivity: 10(High) 6 4

Activate motion time: 1 sec

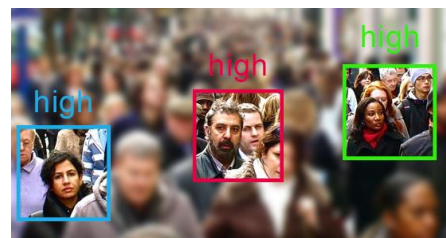
Preview Area1 Area2 Area3



Motion Detection area/sensitivity/motion time adjust and preview



IR Optimizer & 3 steps IR adjust



Region of Interest for 3 areas

Specification

YUC-K7B88

Server	Compression	H.265/ H.264/ MJPEG
	Resolution	2592x1944@30fps, 2048x1536@30fps, 1920x1080@30fps, 1280x960@30fps,1280x720@30fps, 640x480@30fps, 640x360@30fps, 320x240@30FPS, 176x144@30FPS
	Traffic Control	32K ~ 8Mbps
	Max. Frame Rate	(30fps)2592x1944
	Safety	Password protection, IP address filtering, HTTPS encrypted data transmission, 802.1X port-based, authentication for network protection, QoS/DSCP, ICMP
	Protocols	IPv6, IPv4, HTTP, HTTPS, SNMP, QoS/DSCP, Access list,IEEE 802.1X, RTSP, TCP/ IP, UDP, SMTP, FTP, PPPoE,DHCP, DDNS, NTP, UPnP, 3GPP, SAMBA, Bonjour
	Number of User	Max. 10 connections
	Storage Capacity	Micro SD card / FTP / NAS(Samba) / E-mail
	Alerting	SMTP / FTP / Samba / Micro SD
	Pre / Post Alarm	Pre(0,1,2,3,4,5) / Post(0,1,2,3,4,5,10)seconds
	Release for alarm	Motion detection/ I/O / Schedule / Tampering Detection / Sound Detection
Network Camera	Sensor	1/3.2" Megapixel CMOS sensor
	Optical Lens	Vari-focal 3~10.5mm @ F1.4
	View Angle	26.94~70.25°(H), 20.14~51.16°(V)
	D-WDR	Off & 1 ~ 8 level
	AGC	8X ~ 64X
	Shutter Time	Outdoor / Indoor/ 1/30 , 1/50 , 1/60 , 1/100 , 1/125 , 1/250 , 1/500 , 1/1000, 1/5000, 1/10000
	Min Illum	0.5 Lux (Color), 0.1 Lux (B/W)
	IR LED / Range	30pcs / 35M
	Day / Night	Light sensor mode / Color mode(Day) / B/W mode(Night) / Times mode / Synchronize with DI input
	Intelligent Video	ROI/ D-WDR / Tampering Detection / Motion Detection / Privacy Mask / 3D-De Noise Reduction / IR Optimizer / Anti-fog / IR Intensity /Sound Detection / Corridor Mode / Video Orientation
Audio	Audio	2-way
	Audio Compression	G.711(64Kbps) / G.726(24Kbps) / G.726(32Kbps)
	Adjust Volume	Mic-in / Line-out web adjustable
	Audio In	3.5mm phone jack(Support 2-way)
	Audio Out	3.5mm phone jack(Support 2-way)
Terminal	Network Interface	Ethernet (10Base-T/100Base-Tx) / PoE / WiFi (802.11/b/g/n)
	Video Interface	BNC, Video composit (NTSC/PAL)
	External Port	DI / DO
	SD Card	Micro SD Card (Recording trigger for schedule, Motion Detection, IP check, Network wire break down, DI)
General	Operation Voltage	DC 12V Max: 5.88W(IR ON); 3.12W(IR OFF) PoE Max: 7.41W(IR ON); 3.99W(IR OFF)
	Dimen./Weight	77.4mm(φ) x 125.5mm(H) / 720g
	Operation Temp.	-20℃ ~ +60℃ / -40℃ ~ +60℃ (Cold Start Heater option)
	Waterproof	IP66

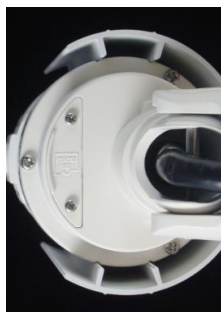
Certificate : CE , FCC , RoHS

*No SD card slot & local storage function for Argentina

Design Features

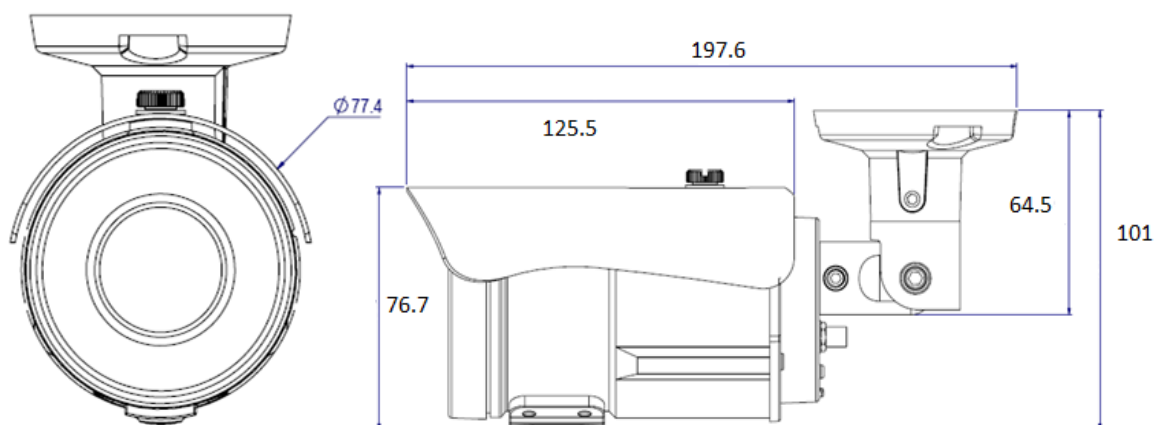


External zoom / Focus adjustment



External SD card slot with cover
(Add rubber for waterproof)

Dimension



Accessories



YUK-D06
Junction Box (option)