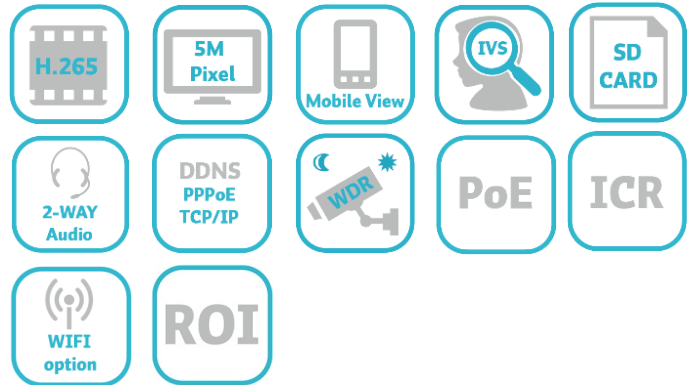


H.265 5MP IP DOME CAMERA

YUC-K688



Feature

- H.265 compression saves bandwidth up to 50%
- 5MP (2592x1944) 30fps real time
- Excellent night vision performance with low noise
- ROI (Region of Interest) function for quality and FPS
- Support SD card continuous recording
- Motion detection (area/sensitivity/motion time adjust and preview)
- Day/night profile adjustment
- Mobile view support (push video)
- POE support
- ONVIF compliant

Low Bandwidth



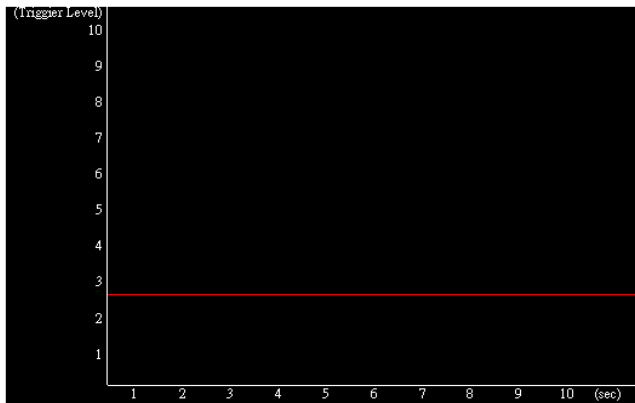
Save Until 50% of HDD Space

Area Setting: Area 1 Area 2 Area 3

Sensitivity: 10(High) 6 4

Activate motion time: 1 sec

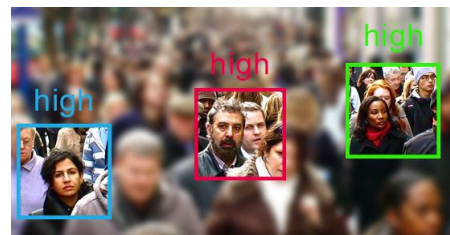
Preview Area1 Area2 Area3



Motion Detection area/sensitivity/motion time adjust and preview



IR Optimizer



Region of Interest for 3 areas

Specification

YUC-K688

Server	Compression	H.265/ H.264/ MJPEG
	Resolution	2592x1944@30fps, 2048x1536@30fps, 1920x1080@30fps, 1280x960@30fps,1280x720@30fps, 640x480@30fps, 640x360@30fps, 320x240@30FPS, 176x144@30FPS
	Traffic Control	32K ~ 8Mbps
	Max. Frame Rate	(30fps)2592x1944
	Safety	Password protection, IP address filtering, HTTPS encrypted data transmission, 802.1X port-based, authentication for network protection, QoS/DSCP
	Protocols	IPv6, IPv4, HTTP, HTTPS, SNMP, QoS/DSCP, Access list,IEEE 802.1X, RTSP, TCP/ IP, UDP, SMTP, FTP, PPPoE,DHCP, DDNS, NTP, UPnP, 3GPP, SAMBA, Bonjour, ICMP
	Number of User	Max. 10 connections
	Storage Capacity	Micro SD card / FTP / NAS(Samba) / E-mail
	Alerting	SMTP / FTP / Samba / Micro SD
	Pre / Post Alarm	Pre(0,1,2,3,4,5) / Post(0,1,2,3,4,5,10)seconds
	Release for alarm	Motion detection/ I/O / Schedule / Tampering Detection / Sound Detection
Network Camera	Sensor	1/3.2" Megapixel CMOS sensor
	Optical Lens	CS mount(DC driver)
	D-WDR	Off & 1 ~ 8 level
	AGC	8X ~ 64X
	Shutter Time	Outdoor / Indoor/ 1/30 , 1/50 , 1/60 , 1/100 , 1/125 , 1/250 , 1/500 , 1/1000, 1/5000, 1/10000
	Min Illum	0.5 Lux (Color), 0.1 Lux (B/W)
	Day / Night	Light sensor mode / Color mode(Day) / B/W mode(Night) / Times mode / Synchronize with DI input
	Intelligent Video	ROI/ D-WDR / Tampering Detection / Motion Detection / Privacy Mask / 3D-De Noise Reduction / IR Optimizer / Anti-fog / Sound Detection / Corridor Mode / Video Orientation
Audio	Audio	2-way
	Audio Compression	G.711(64Kbps) / G.726(24Kbps) / G.726(32Kbps)
	Adjust Volume	Mic-in / Line-out web adjustable
	Audio In	Mic built-in(Support 2-way)
	Audio Out	3.5mm phone jack(Support 2-way)
Terminal	Network Interface	Ethernet(10Base-T/100Base-Tx) / PoE
	Video Interface	BNC, Video composit (NTSC/PAL)
	External Port	DI / DO /RS485
	SD Card	Micro SD Card (Recording trigger for schedule, Motion Detection, IP check, Network wire break down, DI)
General	Operation Voltage	DC 12V Max: 2.76W 24V AC Max: 5.7W PoE Max: 3.99W
	Dimen./Weight	65mm(W) x 58mm(H) x 132mm(L) / 450g
	Operation Temp.	-20°C ~ +50°C

Certificate : CE , FCC , RoHS

*No SD card slot & local storage function for Argentina

Dimension

